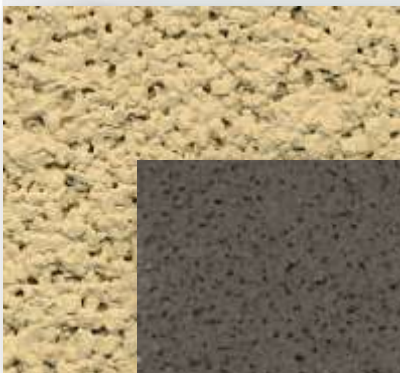
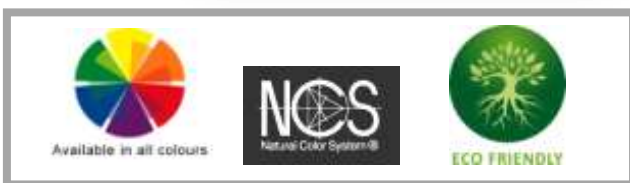


A DECORATIVE AND PROTECTIVE COATING WITH A ROBUST GRANULAR APPEARANCE



PRODUCT INFORMATION

- Suitable for interior or exterior use as a protective & decorative coating on either new or previously painted walls that have been properly prepared.
- Available in variants of 1.0mm & 1.5mm
- Accentuate design elements through imaginative paneling and the creation of contrasting bands. We strongly recommend the use tape joints to create paneling and so to avoid dry joints, this is particularly important when applying the product over a large area.
- Tinted to a wide colour range.
- Eco friendly, water based, LOW VOC LEVEL- 10g/L
- Made to order, supplied ready to use.
- Trowel applied.



UNIQUE INTERNATIONAL GUARANTEE

MARMORAN 10 YEAR INTERNATIONAL GUARANTEE UNDERWRITTEN BY A THIRD PARTY is issued on condition that the system is applied by a Marmoran Licenced Applicator in strict accordance to the full specification and is accepted and signed by the relevant parties. Due to the demand for the highest standard of application and finish, it must be applied by a trained applicator that is skilled and experienced.

PRODUCT CODE AS007

PRODUCT DATA INFORMATION SHEET

PRODUCT DESCRIPTION

Marmoran Marmotex is a decorative and durable coating based on fine marble dust bound in a proprietary coloured binder. Marmoran Marmotex provides a coating of unique texture and colour variety in 1.0 mm and 1.5 mm variants. If required, the coating may be sealed with a protective Marmoran Glaze.

TESTED TO NATIONAL & INTERNATIONAL STANDARDS BY THREE INDEPENDENT LABORATORIES.

TEST STANDARDS

ASTM D4828	Easily cleaned up to 10,000 scrubs without exhibiting wear or signs or loss of adhesion
CGRI/R+H	Superior quality pure acrylic resin ensures resistance to dirt pickup
ASTM 4060	Tough & durable with high resistance to abrasion & scuffing
ASTM G53	UV resistant to prevent excessive chalking, colour change, flaking or peeling
ISO 1519	Exhibits outstanding flexible qualities, yet hard and durable to withstand the stresses of natural expansion and contraction of the substrate
ASTM E96	Controlled water vapour permeability allows the walls to “breathe” to maintain resistance to water ingress and prevent spalling, delamination, algae and dirt retention
ISO 2409	Superior adhesion to all suitably primed substrates
SABS 170	Excellent resistance to alkali salts to prevent coating delamination and adhesion
SABS 1586	Ability to withstand high temperatures with no signs of delamination, blistering or loss of adhesion
SABS 146	Excellent impact resistance and tensile strength
ISO 12040	Exceptional weathering, water repellency and ultraviolet resistant properties

USES

- Designed for interior or exterior use as a protective and decorative coating for a wide variety of new or previously coated surfaces that have been suitably prepared and primed. This includes cement plasters, concrete, fibre cement, ceiling boards, off shutter concrete, highly porous surfaces and gypsum.
- It is particularly suitable to accentuate design elements of a structure through imaginative paneling and the creation of contrasting bands

COLOUR

- Available in a wide colour range.

AVAILABILITY

- Made to order. Supplied ready for use. DO NOT THIN.

PACKAGING

- Packed in 8 and 32kg containers

GENERAL CONSIDERATION REGARDING APPLICATION

SITE SURVEY REPORTS

Site Survey Reports and Records are to be completed prior to product application, during the application and on completion of the project so that the relevant documentation is available for processing the Guarantee.

CLIMATIC CONDITIONS

Adequate protection should be provided against rain and sub-zero temperatures for a period of not less than 24 hours after application. The coating should never be applied during adverse weather conditions, or on wet surfaces.

Even if the weather seems fit, there may be condensation if the temperature of the substrate is at or below the dew point (temperature at which the atmospheric humidity condenses e.g. as dew) the product should only be applied when the temperature of the substrate is at least 2 deg C above dew point. In hot climates, the coating should be applied during the morning and late afternoon hours and if possible away from direct sunlight. Variations in temperatures will affect drying times.

APPLICATION

- The product must be applied in strict accordance to the Manufacturer's System and Specification.
- Please refer to our notes on **BEST PRACTICES FOR SURFACE PREPARATION**.
- **Inspect the substrate** The plaster should be a fine wood float finish and adequate time should be allowed for it to cure [confirm a moisture reading of <15%: this may take from 7-21 days, depending on weather conditions] prior to the application of any specialised, semi-specialised coating or paint.
- **Prepare the substrate** appropriately to ensure that the surface is clean, dry and sound.
- Ensure that the **scaffold** be positioned at a comfortable distance away from the surface so that application technique is not compromised. (400-600mm).
- **Sealing of expansion/control joints:** we recommend the use of sealant compatible with the specified Marmoran product, a suitable Marmoran Primer may then be applied directly over these joints.
- We strongly recommend the use **tape joints** to create paneling and so to **avoid dry joints**.
- **Batch control** it is the responsibility of the contractor to ensure colour consistency. It is recommended that sufficient material to complete the project be ordered where possible to eliminate possible colour variation. Where this is not practical, sufficient material to complete an elevation should be ordered with any excess used as the first coat on the subsequent elevation.
- **Check** spread rates, tools and patterning.
- The product is **supplied ready for use. DO NOT THIN.**

APPLICATION METHOD

Supplied ready for use. Mix gently with a flat paddle before and during application. Do not use a mechanical mixer as this could over develop the colour. Clean with water.

- **Apply** 1 even coat of the appropriate **Marmoran Primer** and allow to cure. We recommend the use of a primer such as Marmoran Universal Primer where the substrate is non porous or dense (i.e. off shutter concrete) followed either by Marmoran RBP Textured Acrylic Primer or Marmoran RLP Textured Acrylic Primer where there is a distinct colour difference between the **Marmoran Marmotex** and the surface to be coated.
- **Apply the Marmoran 1.0 or 1.5mm Marmotex** with a steel trowel and a notch trowel is then used at a 45° angle to obtain a uniform thickness and to remove the excess material. Then polish with a steel trowel to match the Approved colour & pattern of Marmoran Sample Panel.
- **Optional:** Once the coating has cured **Apply** 1 or 2 coats of **Marmoran Universal Glaze** [Int & Ext] OR **Marmoran Supaglaze** [Int] to seal and protect the coating. Crosshatch so as to achieve obliteration, allow for drying time between coats.

SPECIFICATION FOR MARMORAN MARMOTEX SYSTEM

NEW WORK

Inspect the substrate, the plaster should be a fine wood float finish and adequate time should be allowed for it to cure prior to the application of any specialised, semi-specialised coating or paint.

Prepare the substrate appropriately to ensure that the surface is clean, dry and sound.

Apply 1 even coat of the appropriate **Marmoran Primer**.

Apply the Marmoran (please select: 1.0 or 1.5 mm) Marmotex to match the approved colour & pattern of **Marmoran Sample Reference Number: S/_____**. **If required apply** an even coating of **Marmoran Glaze**.

This Marmoran Coating System Has 10 Year International Guarantee Underwritten By A Third Party. It is issued on condition that it has been applied by a Marmoran Licenced Applicator in strict accordance to the full specification and is accepted and signed by the relevant parties. Due to the demand for the highest standard of application and finish, it must be applied by a trained applicator that is skilled and experienced

REDECORATION

Prepare the surface by removing all loose and flaking paint, dirt, grease and grime. Make good all cracks and defects, then repair and prime to match the existing surface. Proceed as for new work.

PRODUCT DATA

Composition	Marble aggregates and additives dispersed co polymer acrylic resin.
Solvent Type	Water
Solids	Volume 75% ± 2% Mass 88% ± 2%
VOC LEVEL	10g/L 0.48%
Drying Times @ 25 deg C, 65% RH	Surface Dry: 2 hours Hard Dry: 12-16 hours Over coating: 24 hours Higher temperatures will accelerate the drying times (approximately halved for every 10 deg C increase) Lower temperatures will retard the drying times (approximately doubled for every 10 deg C decrease)
Theoretical Spread rate	1.0mm Marmotex: 3 kg / m ² 1.5mm Marmotex: 4 kg / m ² This figure is indicative, and subject to applicator skill and substrate type and condition. Actual spread rates must be determined by the Applicator.
Shelf life & Storage	6 - 8 Months in unopened containers. Store in a cool dry and well ventilated place away from excessive heat or an open flame. Do not allow to freeze.
Transport Handling & Safety	Non hazardous in accordance with Transportation and Classification of Dangerous Goods Act (1996) This product is water based and non-toxic. Keep out of reach of children. It does contain chemicals that may be irritants to mammalian tissue. Appropriate protective clothing must be worn. Protect eyes and skin from exposure. If the product is being sprayed, ensure adequate ventilation and ensure the use of proper ventilated masks. Wash spillages immediately with water. Do not induce vomiting if swallowed. Consult a physician if irritation of skin persists or if product is ingested. Gather up environmental spillages, and dispose of in accordance with regulations of the local authorities.
Disclaimer	All information contained herein is given in good faith, based on our specialised knowledge and experience. We reserve the right to effect changes to product and specification alike in the interest of product development and improving technology.